

One Step Further



**MOUNTY**

The economical solution for  
the steep slopes from one hand

# MOUNTY

mountain harvester



## A professional Timber harvest on steep slopes ...

---

...needs a professional technic.

With an ergonomic thoughtful concept of the machine, the mountain harvester MOUNTY sets new standards.

Perfectly matched components create an economical and powerful machine.

- Fuel saving technology
  - Fast and easy fitting
  - Comfortable cabin
  - Compact construction
  - Ergonomic and safe workplace
  - High tower
- 



# The operation

The wood is cut down by fellers and bulled to the combi-machine by the "whole tree method", where it is delimbed cut to length and placed behind the truck on the forest road.



## Application method uphill

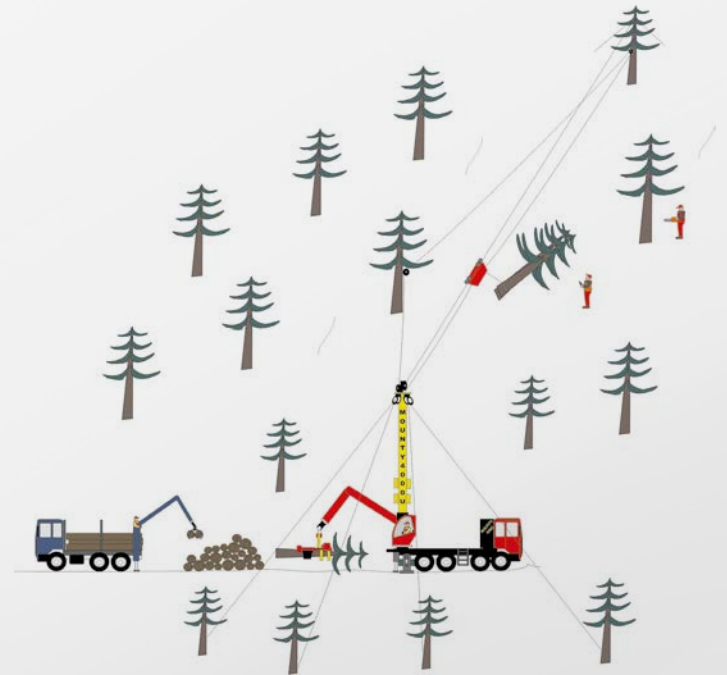
The radiocontrolled winch-carriage Liftliner brings, because of its motorised lifting winch a considerable relief for the staff and therefore faster work cycles.



## Application method downhill with Woodliner

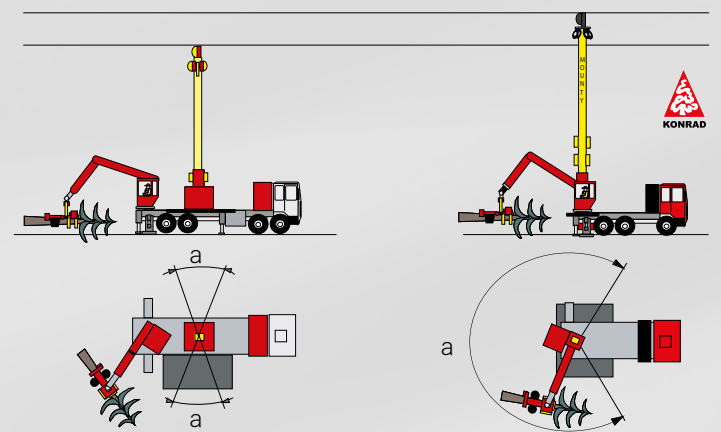
Because of the remote controlled self- driven carriage Woodliner it is possible to do a fast installation, without main and haul-back cable. And it is very easy to operate.

The so piled up timber can be transported away by a truck.



## Application method downhill with Mounty U

The radio controlled carriage Liftliner is operated in the haul-back system. Because of the integrated lifting winch in the carriage, a simultaneous movement of the carriage on the skyline and pulling of logs is possible.



The Mounty compared to conventional systems.

# Mountain Harvester MOUNTY



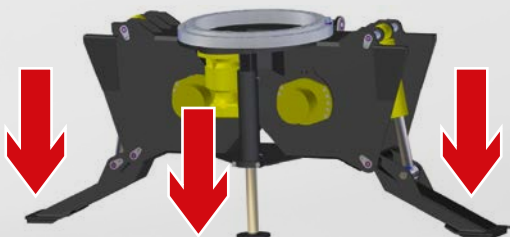
## Strong crane construction

- The new turntable bearing is very powerful and at the same time very sensitive to move.
- Because of the intelligent combination from the tower and crane cabin unit, not only a good height of the tower could be achieved, but also a free and clear crane work place.
- Safe position of work, due to adjustable cabin



## New Konrad crane system

- Internal routing of hydraulic hoses ( no damages through cables and chockers)
- Tower lifting without extra ram cylinder
- Enhanced and strong design



## Strong 3-point support operated on radio control

Because of the radio control the cable crane can be aligned horizontally quickly from the right perspective.

# Cabin

Kk1

## the innovative cabin system

- Automatic door
- Improved safety
- short stop of the carriage
- improved view
- bigger inner space
- optimized air condition and heating
- Improved noise and vibration insulation

### Guiding/winding skyline cable

With the help of the remote controlled skyline guiding ram cylinder, the skyline can be put into the tension compartment and can also be moved in both directions

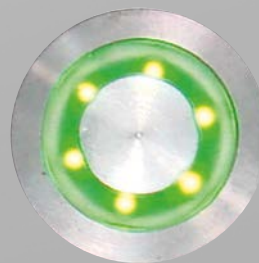
### Fuel saving technology

- Load dependant engine speed control
- Optimized hydraulic
- Low operating speeds

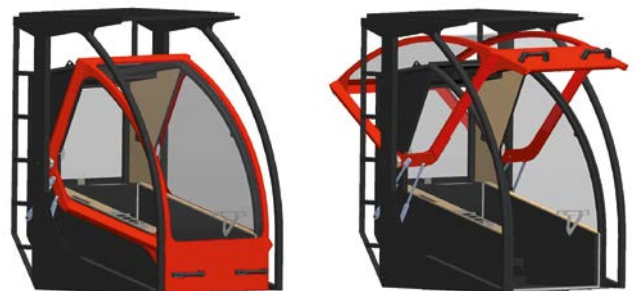


### Optional straw line

- With mechanical free unwinding
- Remote controlled
- 18 kN pulling force
- 1600m cable capacity



If you press the button the cabin door opens immediately. The opening of the chocker cable can be done immediately. By pressing the button again, the door closes.

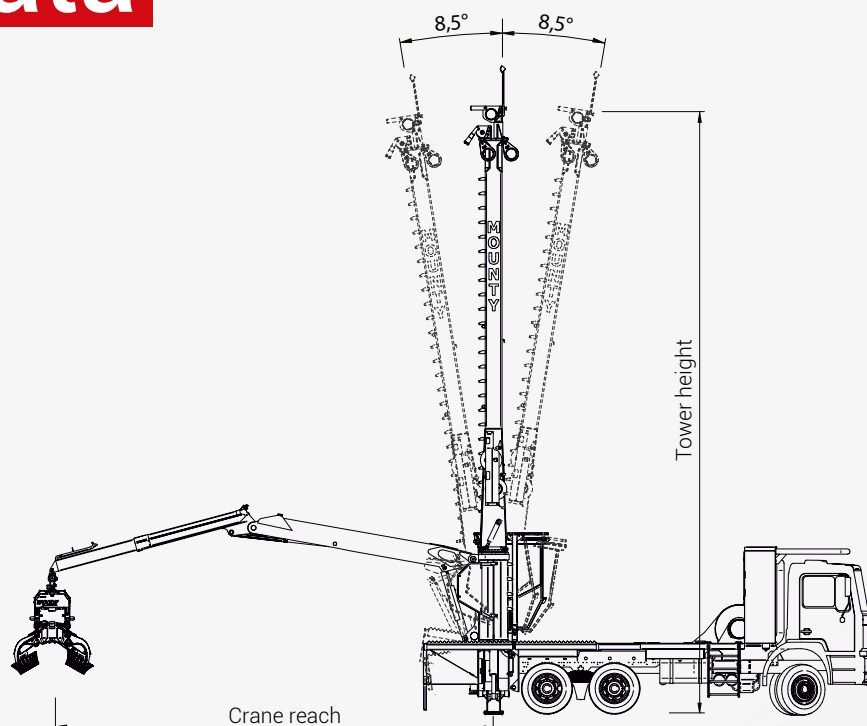


# Technical data

that convince

## Machine options

- Harvester Woody 50
- Harvester Woody 60



## MOUNTY 3000

The fast machine for thinning forest in steep slopes

	MOUNTY 3000	MOUNTY 3000 U
<b>Skyline cable</b>	550m / 18mm comp.	550m / 18mm comp.
<b>Mainline cable</b>	550m / 11mm comp.	550m / 1100 m / 11mm comp.
<b>Mainline winch</b>	30kN / 5 (8) m/sec	30kN / 5 (8) m/sec
<b>Crane lifting force</b>	200 kNm	200 kNm
<b>Turning force</b>	40 kNm	40 kNm
<b>Tower height/crane reach</b>	13,1 m / 9,1 m	13,1 m / 9,1 m
<b>Basic unit/power</b>	MAN TGS 33. 360 6x4 BB (360 HP) <i>or</i> MAN TGS 33.400 6x6 BB (400 HP)	

## MOUNTY 4000

The unbeatable solution on steep slopes

	MOUNTY 4000	MOUNTY 4000 U
<b>Skyline cable</b>	600m / 20mm comp.	600m / 20mm comp.
<b>Mainline cable</b>	650m / 12mm comp.	650m / 1200 m / 12mm comp.
<b>Mainline winch</b>	40kN / 5 (8) m/sec	40kN / 5 (8) m/sec
<b>Crane lifting force</b>	220 kNm	220 kNm
<b>Turning force</b>	42 kNm	42 kNm
<b>Tower height/crane reach</b>	13,5 m / 9,1 m	13,5 m / 9,1 m
<b>Basic unit/power</b>	MAN TGS 33. 360 6x4 BB (360 HP) <i>or</i> MAN TGS 33.440 6x6 BB (440 HP)	

## MOUNTY 5000

A class on its own: Mounty 5000 and strong wood on steep slopes

	MOUNTY 5000	MOUNTY 5000 U
<b>Skyline cable</b>	800m / 22mm comp.	800m / 22mm comp.
<b>Mainline cable</b>	700m / 12mm comp.	700m / 1400 m / 12mm comp.
<b>Mainline winch</b>	50 kN / 5 (8) m/sec	50 kN / 5 (8) m/sec
<b>Crane lifting force</b>	240 kNm	240 kNm
<b>Turning force</b>	44 kNm	44 kNm
<b>Tower height/crane reach</b>	14 m / 9,1 m	14 m / 9,1 m
<b>Basic unit/power</b>	MAN TGS 41.440 8x6 BB/ (440 HP) <i>or</i> MAN TGS 41.440 8x8 BB/ (440 HP)	

# Remote control

technology

The new handheld operating unit convinces by simple handling and operating, an ergonomic design and an impact resistant light body.

For a fast and safe installation, the following elements are controlled as standard over remote control:

- Supports
- Landing ramps
- Tilt device
- Guy line winches
- Skyline winch
- Skyline guidance/ winding
- Strawline winch
- Mainline winch
- Cabin adjustment
- Truck start/stop
- Carriage start/stop
- Winch in the carriage
- Automatic distance control
- Handing over function of remote
- Horn

The following functions are possible over the LCD display:

- Reading of operating data  
Revs, pressure, temperatures etc.
- Changes and choices of frequencies
- Adjustments for the carriage, speeds, ramps etc.
- Use of the remote unit as transmitter



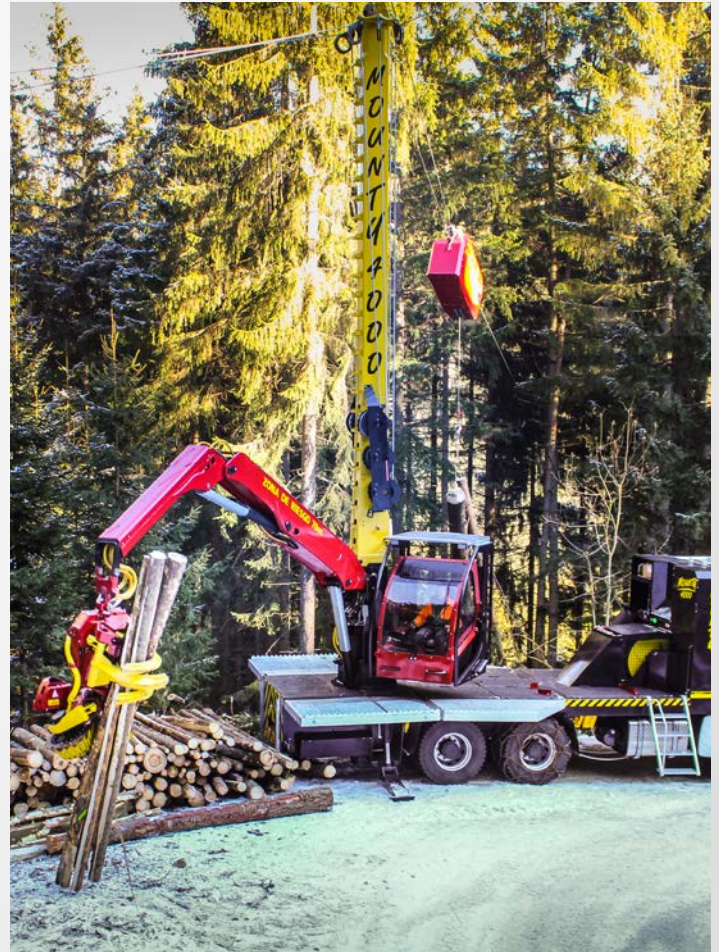
# Mountain harvester MOUNTY

The economic solution for steep slopes from one hand

Not only the cable crane, also the harvester unit, the driver's cabin, the whole truck build up, as well as all the machine and radio controls are coming from the house Konrad.

## This means for the customers:

- Only one person to speak to for spare parts and service
- The series production of such combined machines guarantee a higher quality standard as well as an increased long-term strength.
- Comprehensive warranty with service by the manufacturer for the entire machine.
- Austrian quality product
- Forest-friendly work practices
- Because of the low transfer costs of the machine, the combined machine MOUNTY is also for small timber quantities economical
- The innovative construction of the machine allows fast setting up and breaking down of lines
- The high tower often allows lines without a cable support and provides the crane an additional stability
- When working downhill the operator is protected by the wide tower
- High performance at low machine costs.



The perfectly coordinated components provide a compact and extremely efficient machine

**Konrad Forsttechnik GmbH**

A 9451 Preitenegg  
Oberpreitenegg 52

Tel.: +43(0)4354 2432-0  
Fax: +43(0)4354 2432-35  
e-Mail: [office@forsttechnik.at](mailto:office@forsttechnik.at)  
Web: [www.forsttechnik.at](http://www.forsttechnik.at)



Innovations- und  
Forschungspreis  
Kärnten, Österreich

